

ImViewer.exe

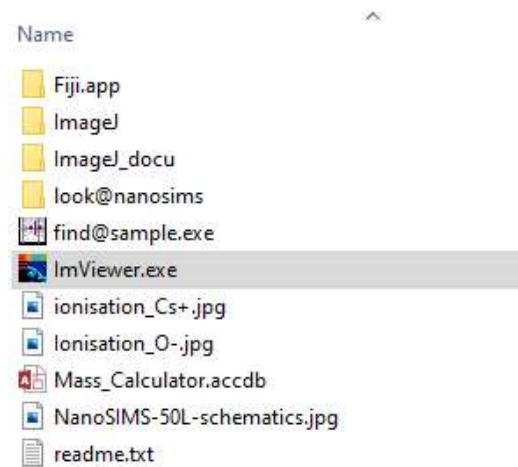
Autor: Johann Lugmeier

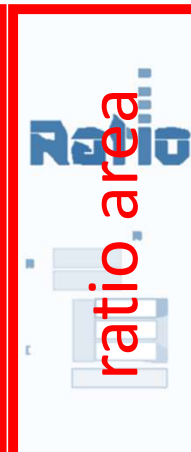
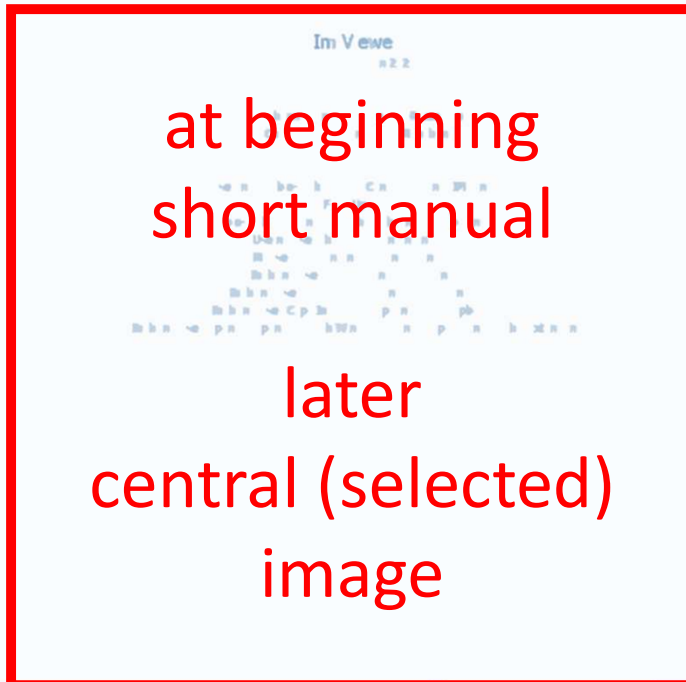
Date: 11.1.2021

Rev.: 6.0

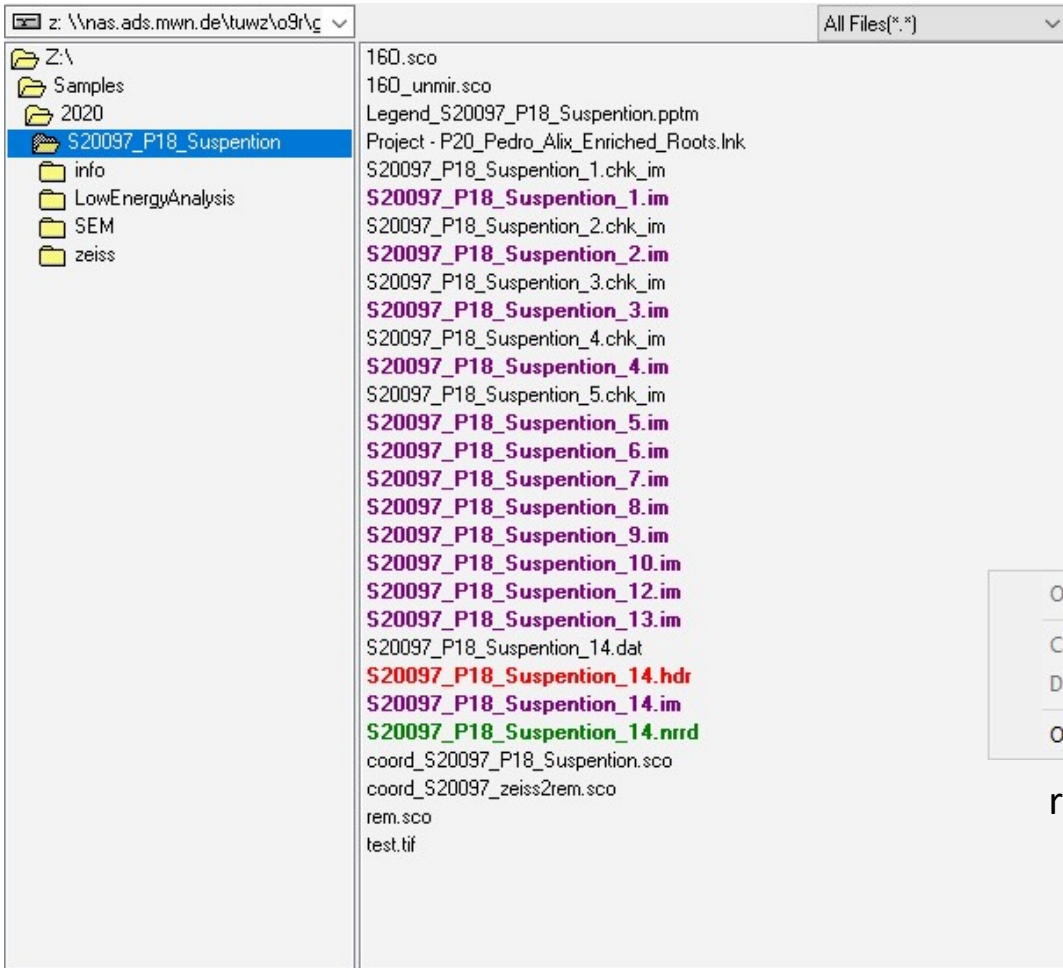
Open ImViewer

To Open ImViewer, double-klick on ImViewer.exe. Normally you can find at Z:\tools\ImViewer.exe





File Select Area



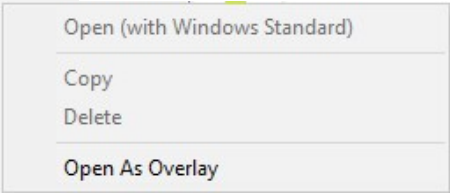
„open“ or double click on

black file: nothing can be done

violet file: Cameca im-File will be opened

green file: OpenNims nrrd-File will be opened

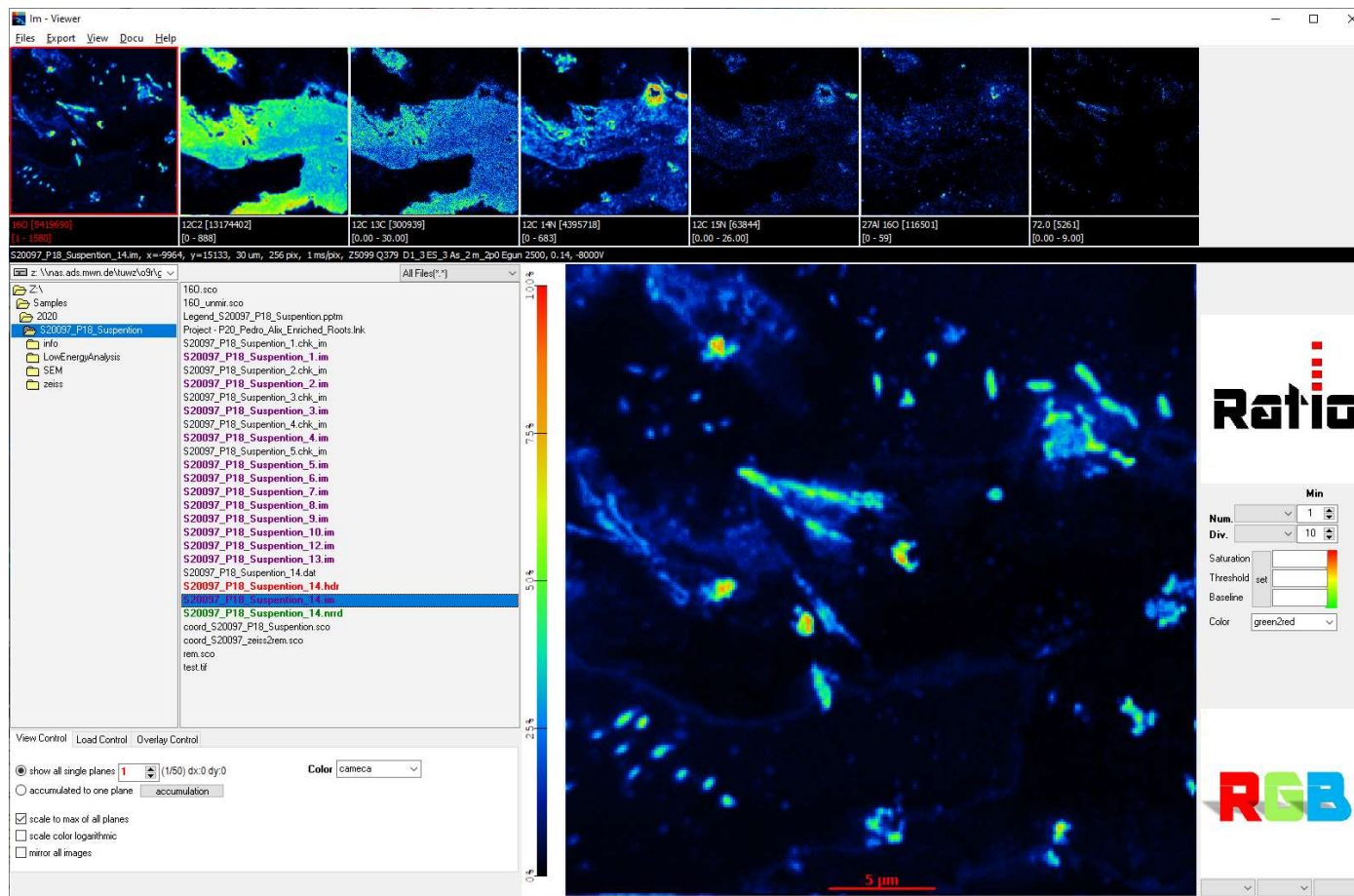
red file: Envi hdr-File will be opened



right mouse menu

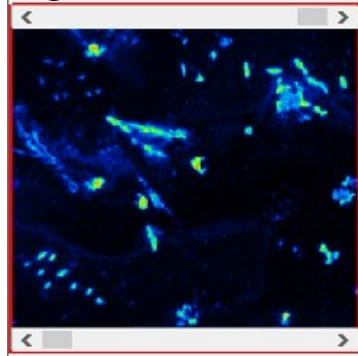
Basic Operations

- double-click on im (violet), hdr (red) or nrrd (green) file opens measurement with up to 8 masses
- double-click on one of the small images expands it to the big image
- use mouse wheel to zoom in and out at one image
- use „ctrl“ and mouse wheel to zoom in and out at all images



View Thresholds

High View Threshold



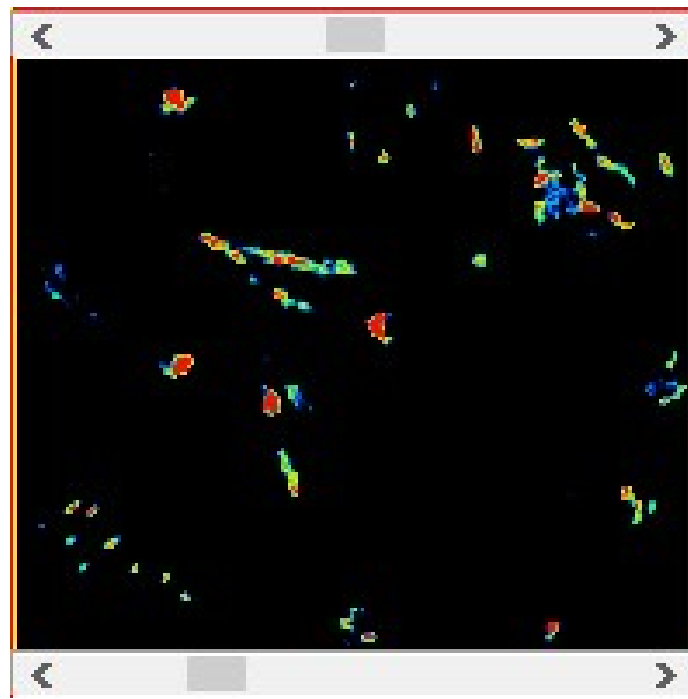
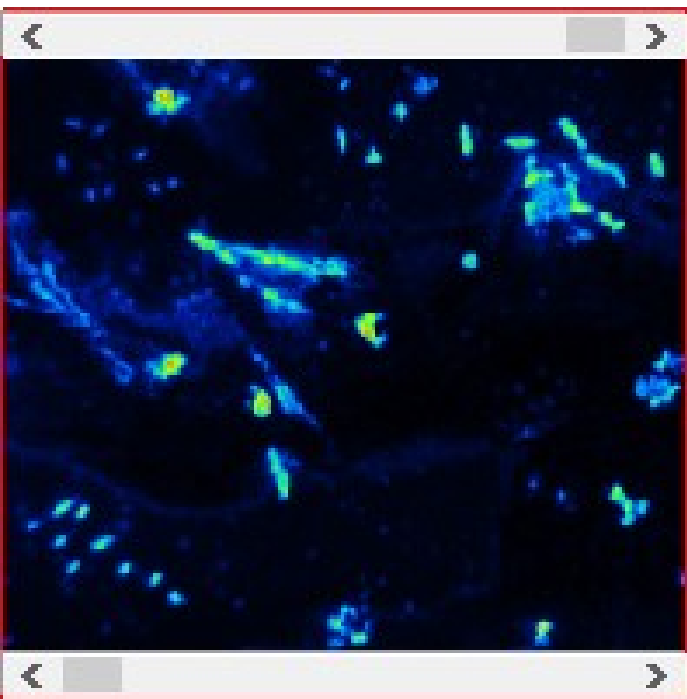
Go with cursor to upper or lower border of on the mass images scroll bars for view thresholds will get visible.

counts \leq Low View Threshold \implies minimum color (black)

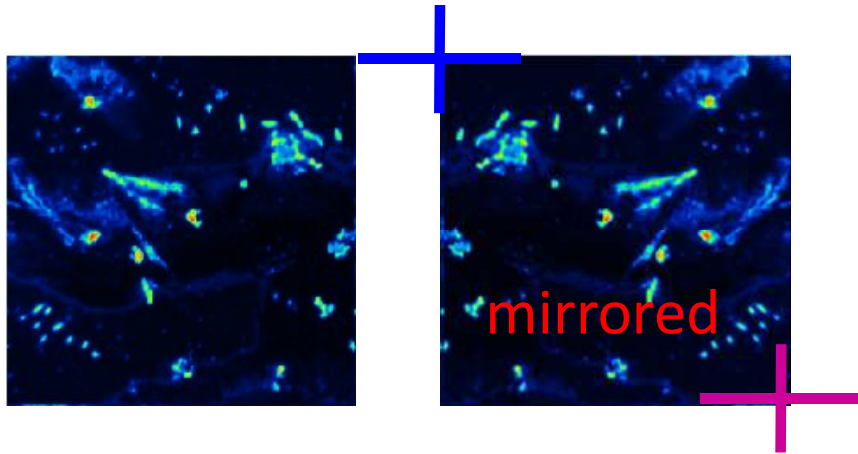
counts \geq High View Threshold \implies maximum color (red)

View Threshold is also used for RGB images

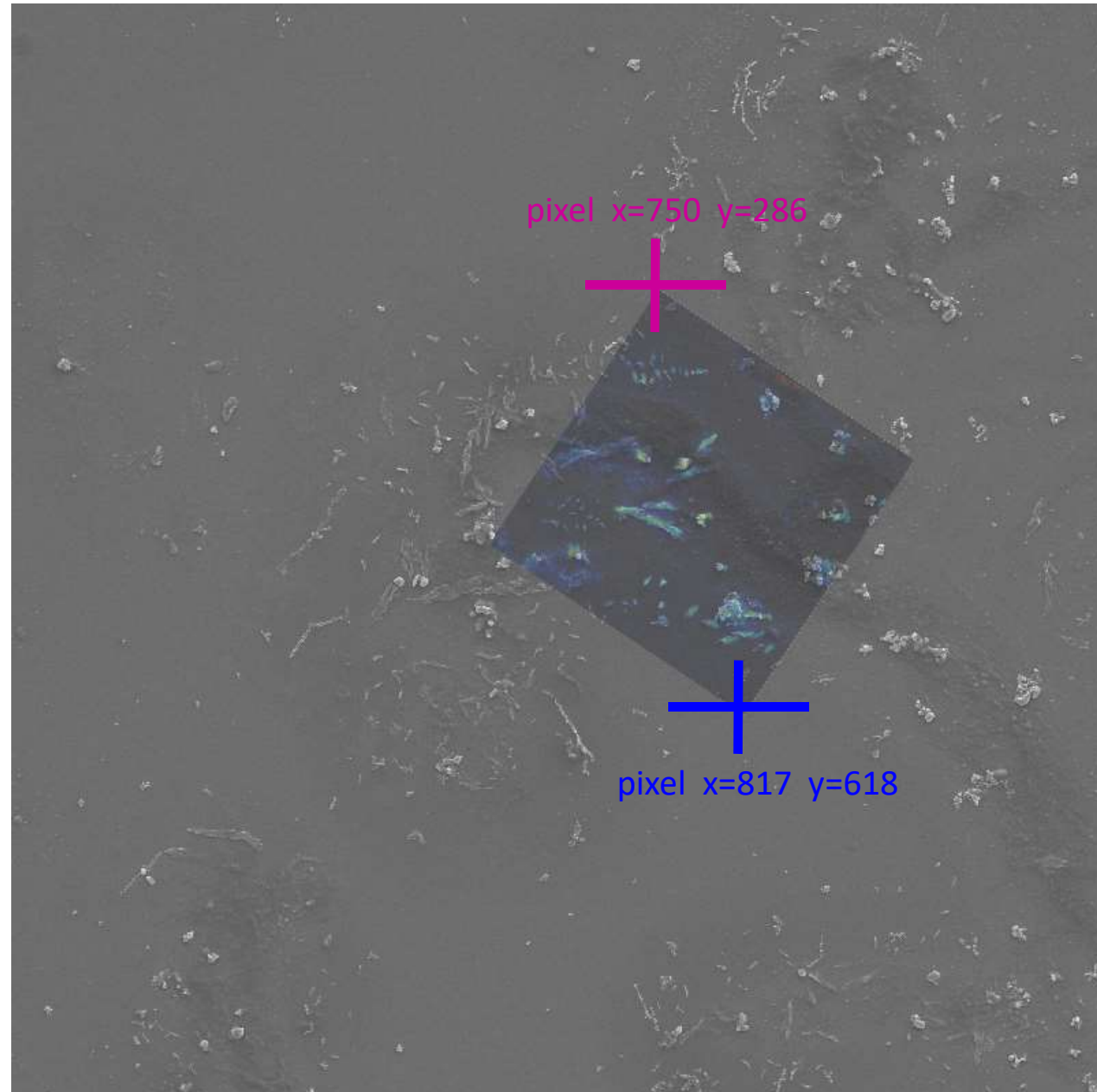
Low View Threshold



Overlay Image

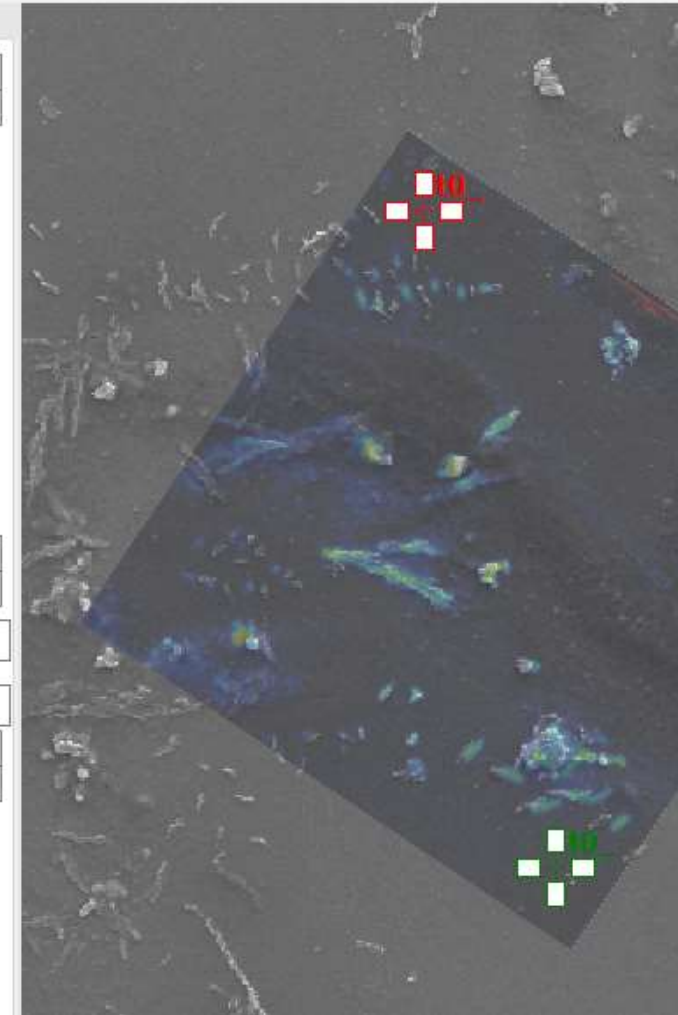
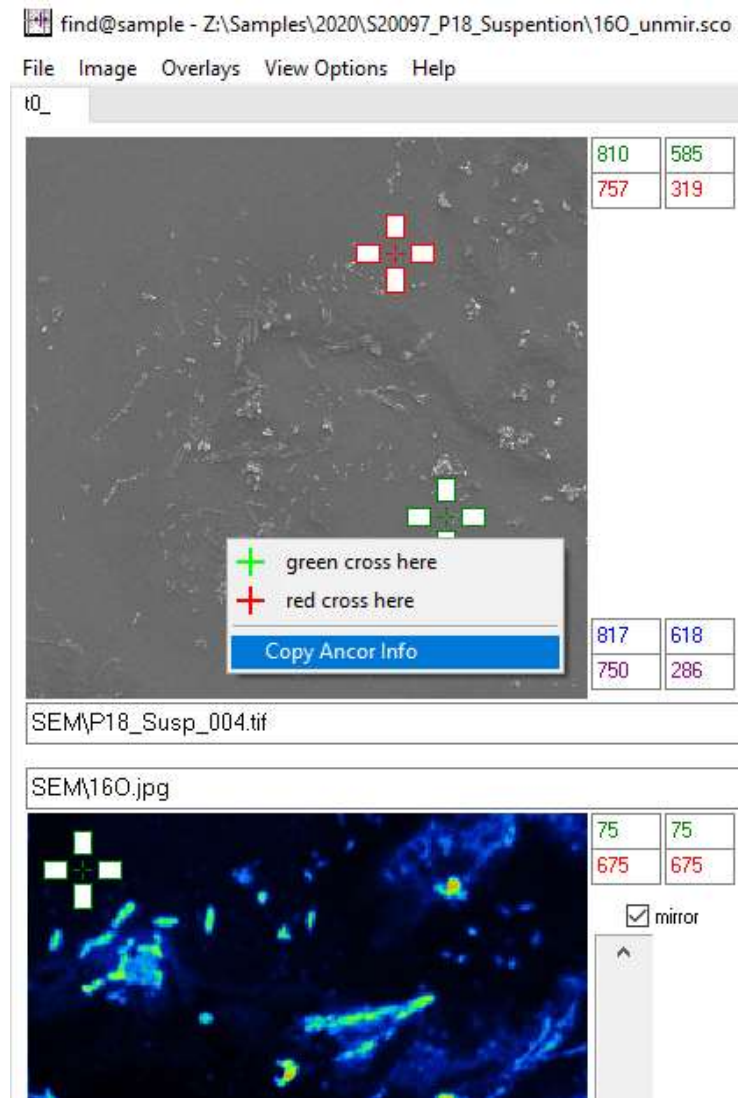


example: we have a measurement of 40 μm (colored) and a SEM image from the same area (grey). And we know where is the **left-up-corner** and the **right-down-corner** of **mirrored** im-file is anchored (pixels coordinates) in the original SEM image.



find@sample

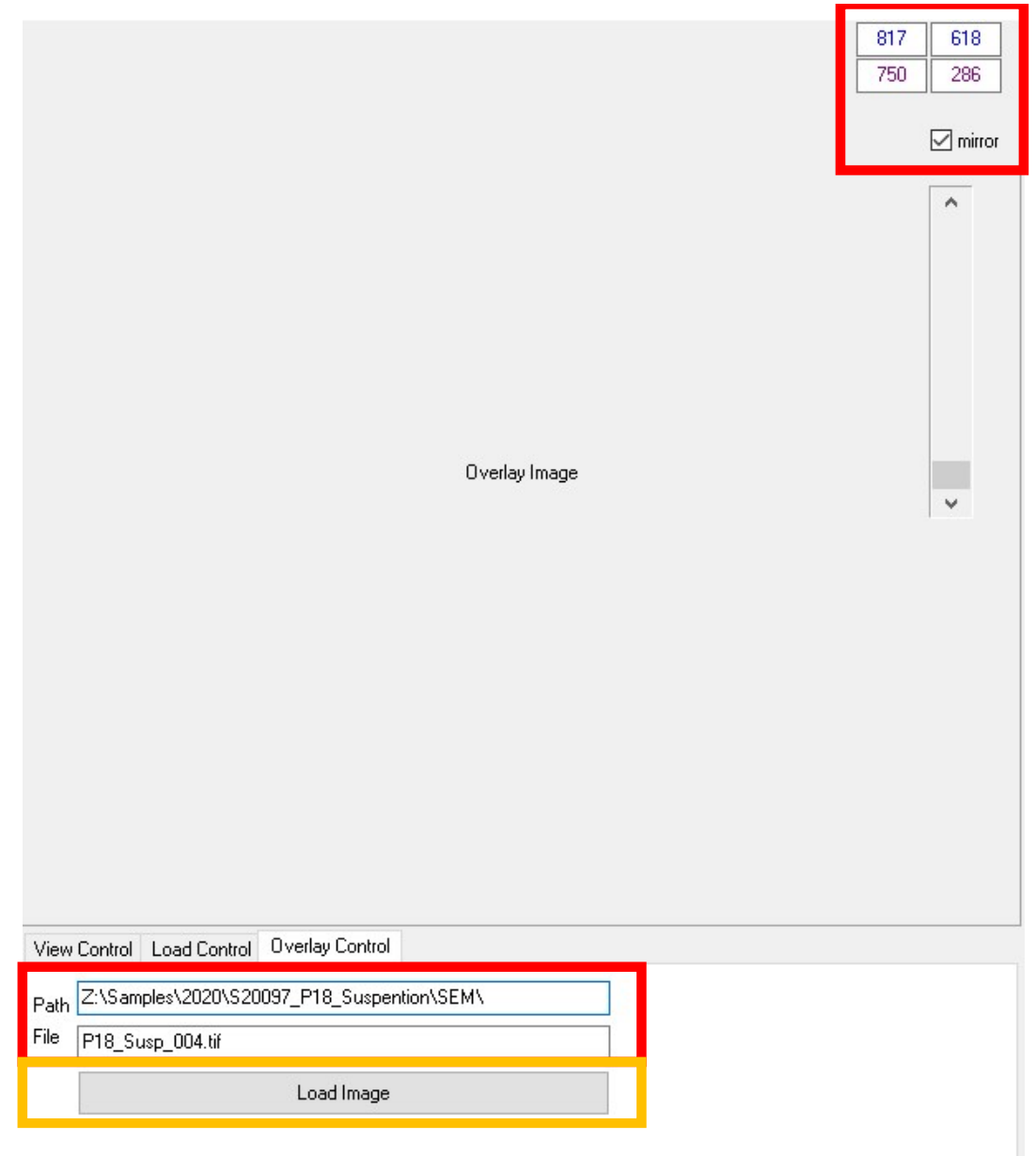
in overlay-mode you can „copy ancor info“
to clipboard

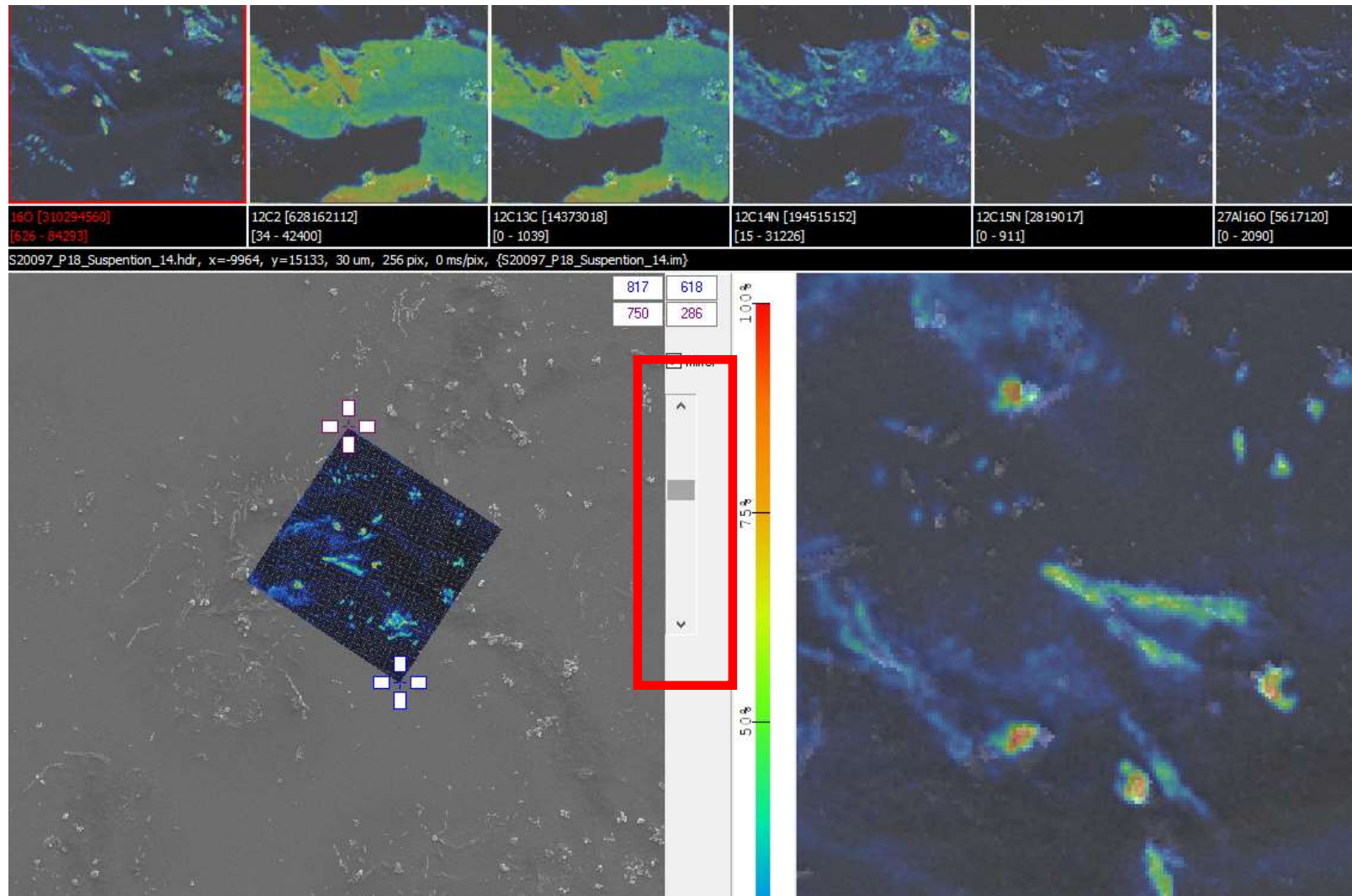


set focus to „path“ or „file“

and „past“ (right mouse menu or ctrl-P) all informations found from find@image to the fields.

Press „Load Image“.





with the **scroll bar** you can control visibility/transparency of the overlaid images